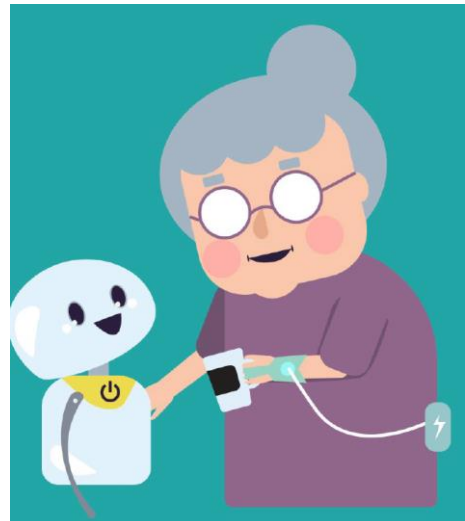


## Save the Date!

The PROTECT project's ("Proactive health and welfare technology for Nordic users and societies") on-line/hybrid workshop:

### **Nature of and needs for proactive health and welfare technology use in care solutions and processes for end-users and their informal caregivers**

**16-17 September 2021**



The PROTECT project and Norwegian Centre for E-health Research in collaboration with Danish Dementia Research Centre will be hosting a two-day workshop entitled "Nature of and needs for proactive health and welfare technology use in care solutions and processes for end-users (older adults and people with disabilities) and their informal caregivers" from 16 September (10.00–16.30 CET) to 17 September 2021 (9.30–16.30 CET). The workshop is free of charge.

Healthcare and social care are facing a shift in which digitalization, such as use of health and welfare technology use will play an increasingly important role in specific care solutions but also in obtaining more effective patient- or client-focused processes and facilitating independent life. For this, an understanding of clients and informal caregivers' needs; implementation such as the necessary change management, and systemic socio-technical understanding are needed. This applies to different contexts, such as healthcare and home care, disability care, social care, and educational practices.

The workshop is the first of a series of three Nordic workshops to synthesize and advance Nordic research-based knowledge of proactive health and welfare technology with a user and societal perspective. The project emphasizes the enabling factors of digitalization. The workshop series is supported by Nordic Welfare Centre. PROTECT is funded by NOS-HS (The joint committee for Nordic research councils in the humanities and social sciences) via Academy of Finland. In addition to the organizers of the first workshop, Mälardalen University (Sweden) and Lappeenranta-Lahti University of Technology LUT (Finland; the coordinator) take part in the PROTECT project.

The workshop is open for invited participants, such as invited researchers and national stakeholders, for example, policymakers, non-governmental organizations and companies from the Nordic countries. There will be tailored sessions for diverse participants. Further details about the program will be available by the end of June. If you have any questions regarding PROTECT, the workshop series or this event, please email Professor Helinä Melkas, coordinator of the PROTECT project, on [helina.melkas@lut.fi](mailto:helina.melkas@lut.fi).

## Instructions for early career researchers

**Early-career researchers** will have an active role in the workshop, including prior submission of an up to 10-page research description covering the central aspects of their work, such as:

- context and motivation that drives the research
- research objectives/goals/questions
- background/literature review of key works that frame the research
- hypothesis or problem statement
- research approach and methods
- results to date and their validity (if relevant)
- dissertation status (if relevant) and next steps
- current and expected contributions

Early-career researchers will also have an active role in the co-creation at the workshop and can submit a paper afterwards for commenting (for further submission to a journal).

At least three early-career researchers (doctoral students and early-career researchers with research interests and competences related to health and welfare technology) from each of the four PROTECT countries will be invited to participate in the workshop (and all three workshops). A certificate of attendance will be provided. Further information about early-career researchers' activities during the workshop will be available by the end of June.

The research description should be sent **by 15 August 2021** by e-mail to your country's contact person:

- Norway: Monika Knudsen Gullslett, [Monika.Knudsen.Gullslett@ehealthresearch.no](mailto:Monika.Knudsen.Gullslett@ehealthresearch.no)
- Denmark: Laila Øksnebjerg, [Laila.Oeksnebjerg.02@regionh.dk](mailto:Laila.Oeksnebjerg.02@regionh.dk)
- Sweden: Rose-Marie Johansson-Pajala, [rose-marie.johansson-pajala@mdh.se](mailto:rose-marie.johansson-pajala@mdh.se)
- Finland: Helinä Melkas, [helina.melkas@lut.fi](mailto:helina.melkas@lut.fi)

Welcome to the workshop!

