


Building a Strong Dialogue Around Research With the City of Copenhagen



/ Annemette Ljungdalh Nielsen

Health and Care Administration, Department for Welfare and Innovation

12.06.2017



Agenda

- Who we are and what we aim for
- How to become an attractive research partner for us



A few facts about Copenhagen, Health and Care Administration

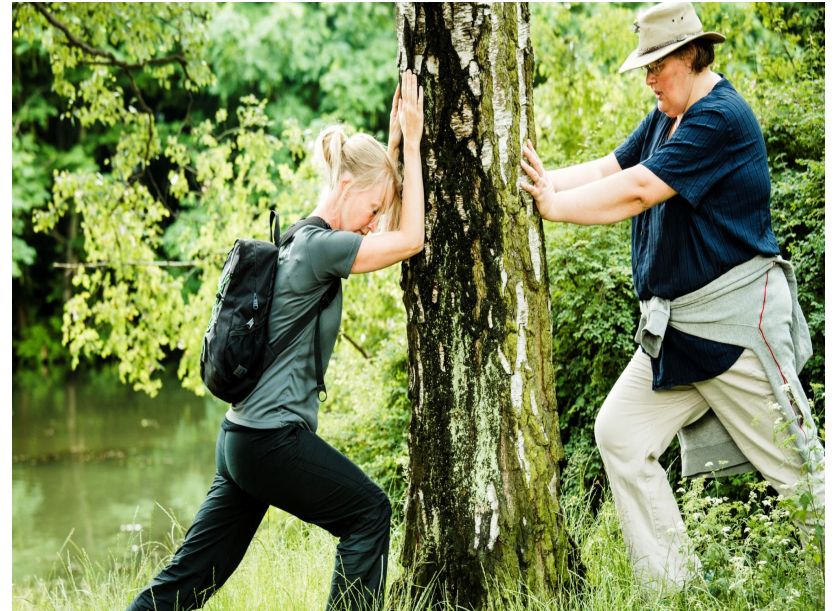
Two main areas of responsibility

Elderly care and services



Seniors 65+

Health and prevention



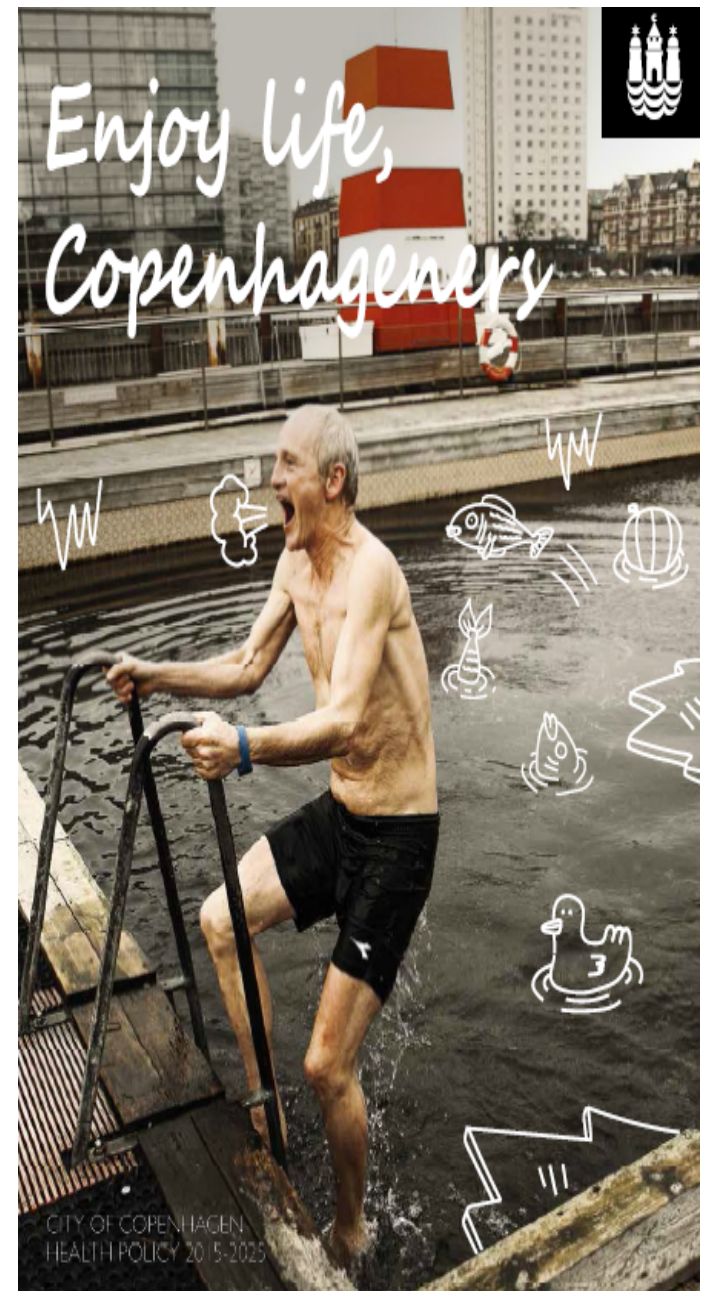
All citizens

Policy for Health in the Municipality of Copenhagen 2015-2025

10 year policy ensuring long term strategy with action plans, initiatives and interventions

3 political benchmarks for 2025:

- Living with improved life quality – throughout life
- Living with equal opportunities for a healthy life
- Living longer





Policy for elderly in the Municipality of Copenhagen 2015-2018

3 visions of freedom, safety and citizenship

- **Feeling Free**
Empowerment, everyday rehabilitation, Flexibility
- **Feeling safe**
Help when needed. Coherent help, the right information at the right time, welfare technology, well educated staff
- **Being a Citizen**
Volunteers, civil society, support the relatives, reduce loneliness among elderly in own homes

**LEV
STÆRKT
– HELE LIVET**

KØBENHAVNS ÆLDREPOLITIK 2015-2018

A few figures

Nursing home

4379 lived in a nursing home in 2012

44 nursing homes

19 public and 25 independent

Home care service

9539 citizens receive daily help

54% will only receive practical help

6% only receive personal care

40% have both personal care and practical help

Budget: Approx. 6.4 billion
DKK

Number of employees:
Approx. 10,000

Health care services (yearly 2016)

11.320 citizens attend rehabilitation interventions

1.814 citizens receive health preventive services

Motivation for research participation

- Increase the quality of our current health and work –

- Evidence building
- Technological development
- Improved methods of treatment/ prevention
- Analysis of data
- Re-organisation of structures and processes
- ...

- Open our eyes to new possibilities and challenges

How to become an attractive research partner for us

Choose the right topics and research questions

- Currently prioritized areas where the municipality needs more research:
 - Effect of preventive public health initiatives to reduce inequality in health e.g. focusing on smoking, alcohol and mental health
 - Evidence building re rehabilitation of dementia patients
 - Improvement of methods to prevent readmission to hospital treatment targeting the elderly medical patient
- Frame problem at municipal level
- Formulate impact points in relation to application of research results in a municipal context

Make a research design that supports the translation from scientific investigation to practical application

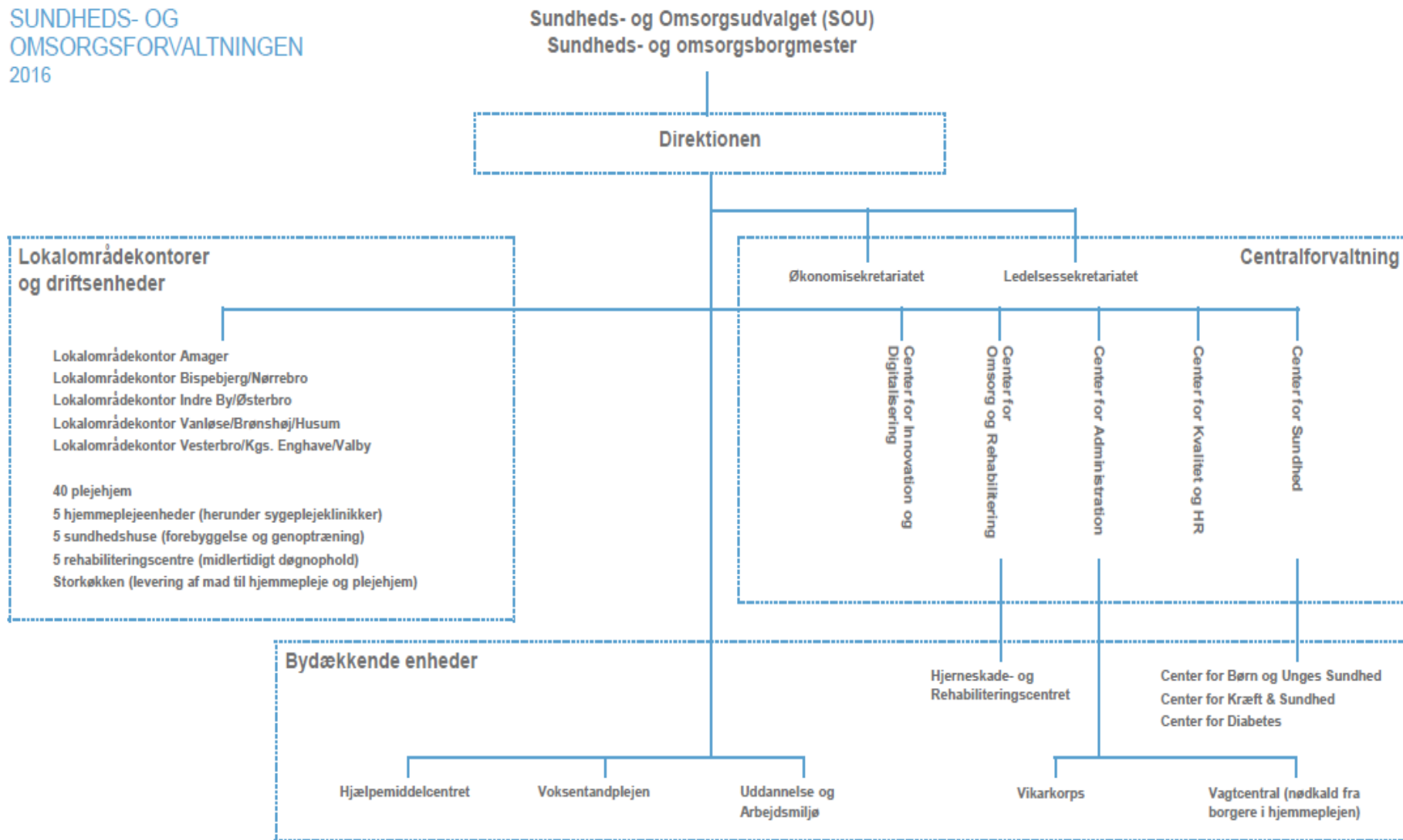
- Data collection methods which put minimal strain on employees and leaders
- Data collection methods which build competence and skills among employees
- Compensation in research budget for resources drawn from organisation (when wanted).
- Dissemination methods which target the real end-users of new knowledge. Preferably during the project period as well as towards the end.

Set of time for dialogue and bureaucracy

- First point of contact: Annemette L Nielsen (hb2g@suf.kk.dk)
 - Dialogue on research focus, design and plans for dissemination
 - Facilitates the dialogue with rest of the administration – through appointed research coordinators
- A research project requires administrative approval at high level if:
 - it involves > 40 citizens and 5 employees
 - the duration > 6 months
- **Plan for at dialogue and decision process of 2-3 months**

Organisation of Health and care administration

SUNDHEDS- OG
OMSORGSFORVALTNINGEN
2016



Thank you for your attention

Annemette Ljundalh Nielsen (hb2g@suf.kk.dk)